

Communicate

Integration Platform Monitor Hub and Tray User Guide

2011.08.07

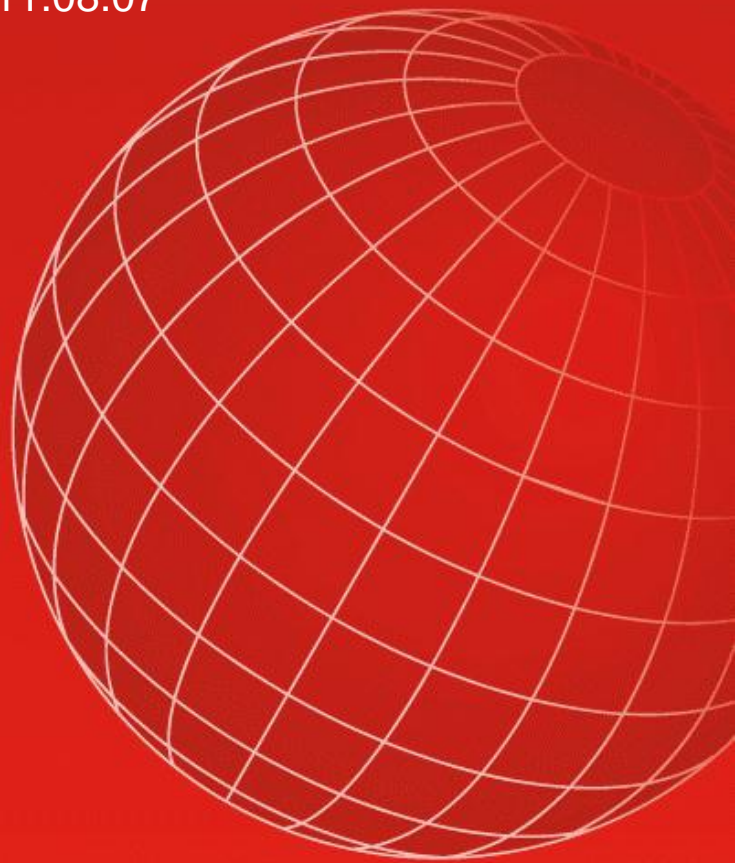
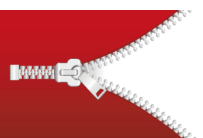




TABLE OF CONTENT

1.	IPM Hub	3
1.1	About IPM Hub	3
1.2	Installation	3
1.2.1	Prerequisites	3
1.2.2	Installing IPM	3
1.3	How to use IPM	3
1.3.1	Configure	3
1.3.2	Overview	5
1.3.3	Rotation View	7
2.	IPM Tray	9
2.1	About IPM Tray	9
2.2	Installation	9
2.2.1	Prerequisites	9
2.2.2	Installing IPM Tray	9
2.3	How to use IPM Tray	9



1. IPM Hub

1.1 About IPM Hub

IPM Hub is a desktop application which enables the monitoring of multiple remote IPM Web-applications within a single application. It presents an aggregated view of errors and suspended messages in all your IPM Webs by polling them at configurable time intervals.

1.2 Installation

1.2.1 Prerequisites

- Microsoft .NET 4 Framework

1.2.2 Installing IPM

Installation of IPM is done by running "IPM Setup.exe".

1.3 How to use IPM

1.3.1 Configure

When you start up IPM Hub for the first time you will need to configure which IPM Webs you wish to monitor.

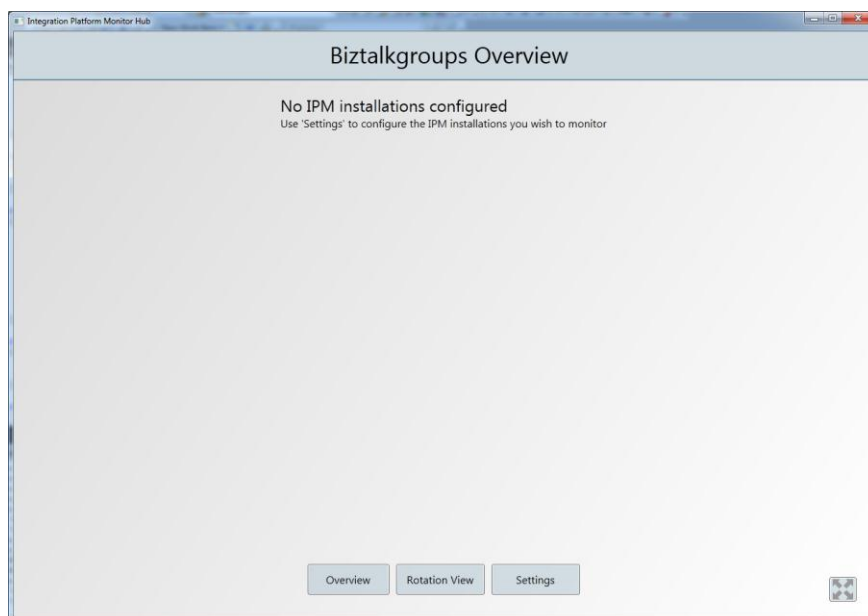


Figure 1 - Hub - Overview - First startup



To do this you need to choose “Settings” from the main menu.

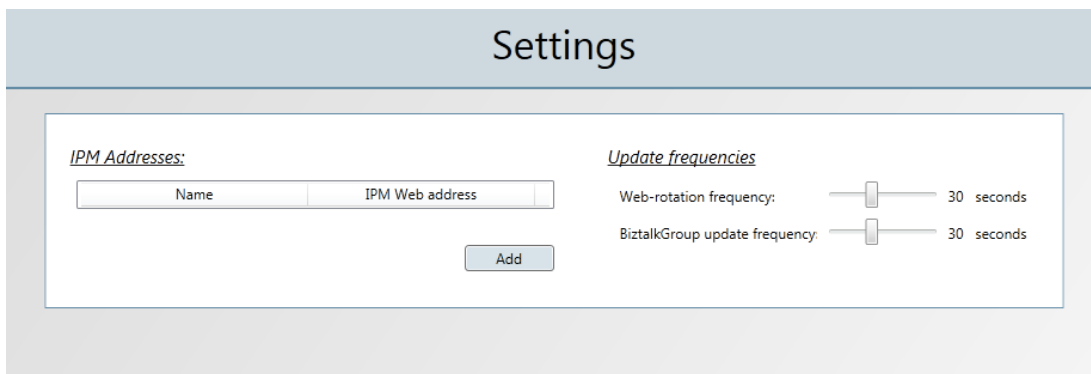


Figure 2 - Settings

Click on the “Add”-button to configure the IPM Web you wish to monitor remotely.

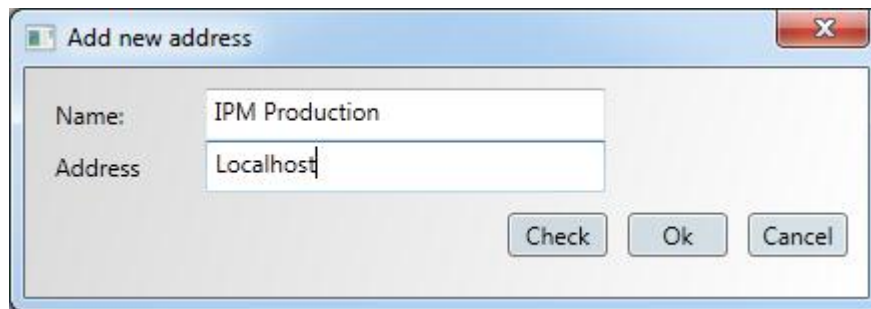


Figure 3 - Add/Edit address

Give the IPM Web a unique and suiting name and enter its root-http-address.

By pressing the “Check”-button you can verify that the given URL is a valid website. Save your address by pressing “Ok”.

Continue this step for each web.

Within “Settings” you can also configure the update frequencies that IPM Hub uses when polling the status of the remote IPM webs. Use the sliders to set the following values:

Web-rotation frequency: The duration of time that the “Rotation View” spends displaying a IPM Web in the embedded browser before switching to the next installations website (See “Rotation View”).

BizTalk Group update frequency: The timespan in seconds between each time IPM Hub polls the remote webs for status updates.



You can now choose “*Overview*” from the main menu, which will take you to the first of the two main monitoring views in IPM Hub.

1.3.2 Overview

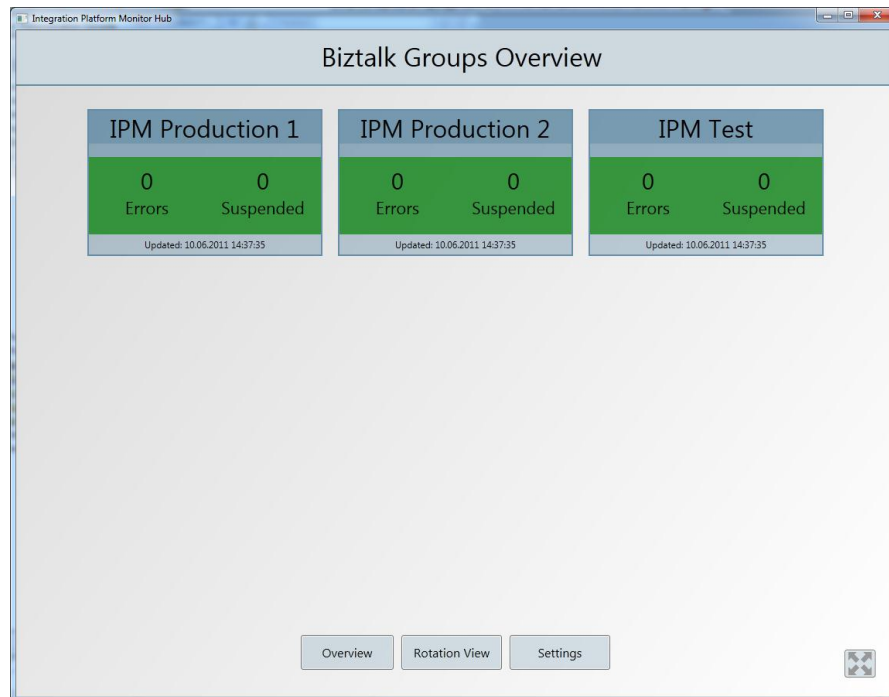


Figure 4 - Hub “Overview” with configured IPM-webs

“*Overview*” gives you a detailed view of all of the monitored IPM Webs, which includes errors, suspended messages and the time of the last update.

By clicking on the name of any given IPM-Web, an external browser is opened and takes you to the root of that web.

This overview is continually refreshed based on the value of “*BizTalk Group update frequency*” set in the settings area.

If there are no errors or suspended messages, this is indicated by the green color as seen in the picture above (Figure 4). The presence of errors and suspended messages is alerted to the user by a red and yellow color (Figure 5).



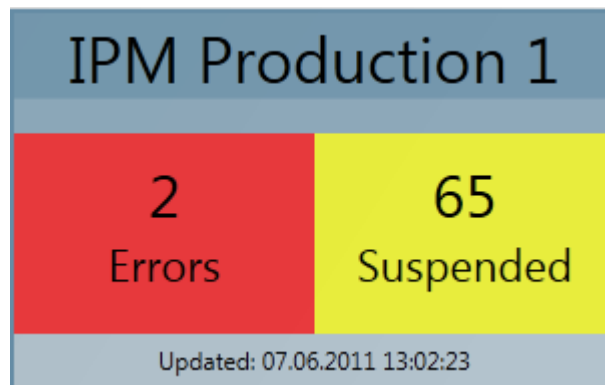


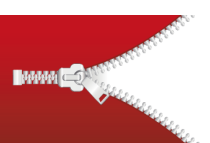
Figure 5 – Aggregated BizTalk Group application statuses

If the application is unable to get a status from the IPM Web, a special error message is displayed. Typical errors may be connectivity issues, an invalid license or that the entered URL points to an unsupported version of IPM Web.



Figure 6 – Indication of failed status

synching



1.3.3 Rotation View

The second of the two monitoring views is the “*Rotation view*”.

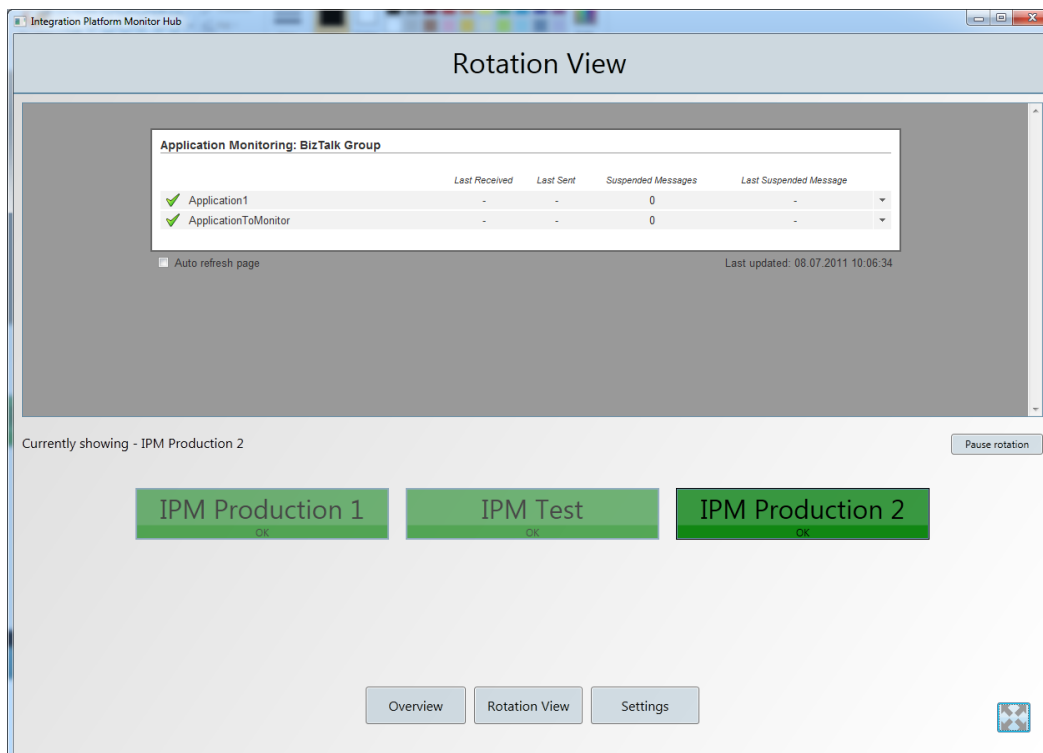
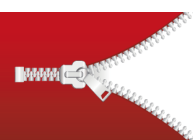


Figure 7 – “Rotation view”


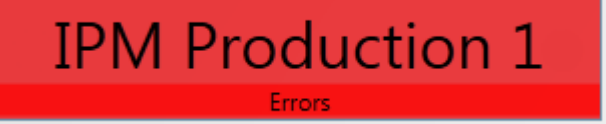
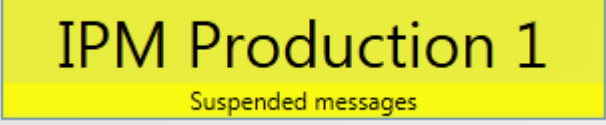

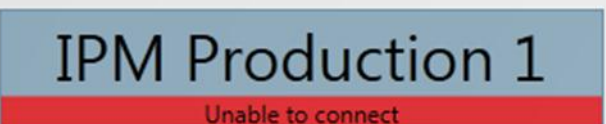
The “*Rotation view*” displays a status bar for each of the IPM-webs in the lower half of the screen and displays a browser window with the currently highlighted web in the upper half.

The time spent showing each website is the timespan configured by the “*Web-rotation frequency*” slider in the settings area

The currently displayed IPM Web is indicated by both the “Currently showing”-label beneath the browser window and by higher opacity in the status bars. You can at any time pause/un-pause the rotation by using the “*Pause-rotation*” button. Not that this will only stop the rotation between the different webs and not the update of the colored status bars.



The status bars will display less information about each IPM Web than in “Overview”. The table below shows the four types of status bars that are displayed.

	<p>Everything is OK with the given BizTalk Group.</p>
	<p>There exists one or more error(s) within the given BizTalk Group.</p>
	<p>There exists one or more suspended messages in the given BizTalk Group.</p>
	<p>Note that errors take precedence over suspended messages, and thus an installation that indicates an error, may also have one or more suspended messages.</p>
	<p>This indicates an error that hinders IPM Hub to fetch a status report from the IPM Web.</p>

By clicking on the status bar, the embedded web-browser will display a view of the given IPM Web.



2. IPM Tray

2.1 About IPM Tray

IPM Tray is a monitoring-application that resides in the Windows Notification Bar and reflects changes your IPM-Web by the use of visual and audible alerts.

2.2 Installation

2.2.1 Prerequisites

- Microsoft .NET 4 Framework

2.2.2 Installing IPM Tray

Installation of IPM is done by running "IPM Setup.exe".

2.3 How to use IPM Tray

When you start IPM Tray you are presented with a window for configuring settings (Figure 8).

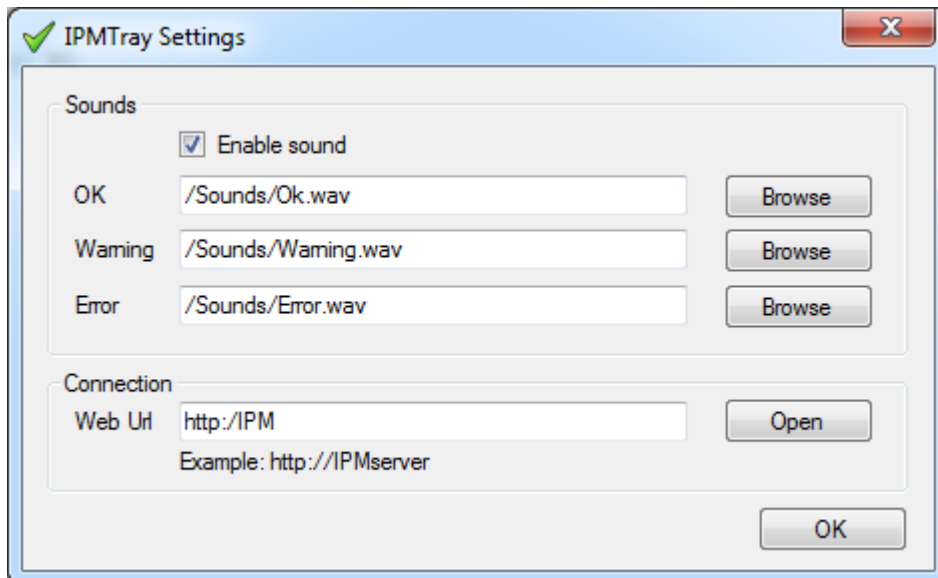


Figure 8 - IPM Tray - Settings

First you must decide whether you want to enable sounds or not. By enabling this you will receive audible alerts every time the tray-application transitions from one state to another.



IPM Tray has three audible alerts:

OK – This is the sound played when IPM Web returns to an “OK” status after having been in a “Warning”- or “Error”-status.

Warning – The sound played when the IPM Web transitions from any of the other states to a “Warning” state.

Error – The sound played when the IPM Web transitions from any of the other states to an “Error” state.

You can choose to use the default sounds that ship with the application or add your own custom sound-files (wav-format) by pressing the “Browse”-button adjacent to the respective sound text fields.

Lastly, you must configure the IPM Web you wish to monitor the status of. This is done by entering URL to the root of the web-application. You can use the “Open”-button to open an external browser and see if the entered address indeed is a valid IPM Web.

You can now press the “OK”-button to start the monitoring. IPM Tray will put itself in the Windows Notification Bar in the lower right of your Windows screen. (*Figure 9*)



Figure 9- IPM Tray running in the Windows Notification Bar with an "OK" status

If this icon is not visible by default, you can right-click on the Notification Bar and press “Customize” to configure it to always display the IPM Tray icon.

When the status of the IPM Web changes, it will now be reflected by a change in the IPM Tray icon (*Figure 10*), and if configured, a corresponding audible alert.



Figure 10 - IPM Tray transitioned into an error state



By right-clicking on the icon (*Figure 11*) you have the choice to open a browser to take you directly to the IPM Web (“*Web ...*”), reconfigure the settings (“*Settings ...*”) or exit the application (“*Exit*”).

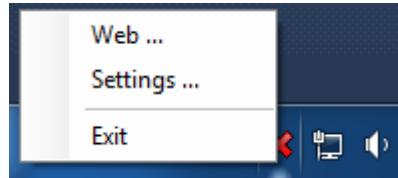


Figure 11 - IPM Tray context menu

